

FOR SALE

Kings Acres Road/ Washington Hwy - 8.612 Acres Kings Acres Rd., Ashland, VA 23005



Exclusive Agent:

Clifford B. Porter, CCIM, SIOR
804.521.1442
cliff@porterinc.com

4801 Radford Avenue
P.O. Box 6482
Richmond, VA 23230
804.353.7994
www.porterinc.com

- 8.612 Acres Total
- Zoned B-3 & A-1
- Corner 2.262 Acres - \$950,000
- Rear 6.35 Acres - \$952,500

PORTER
REALTY

Working Hard, Working Smart... For Our Customers

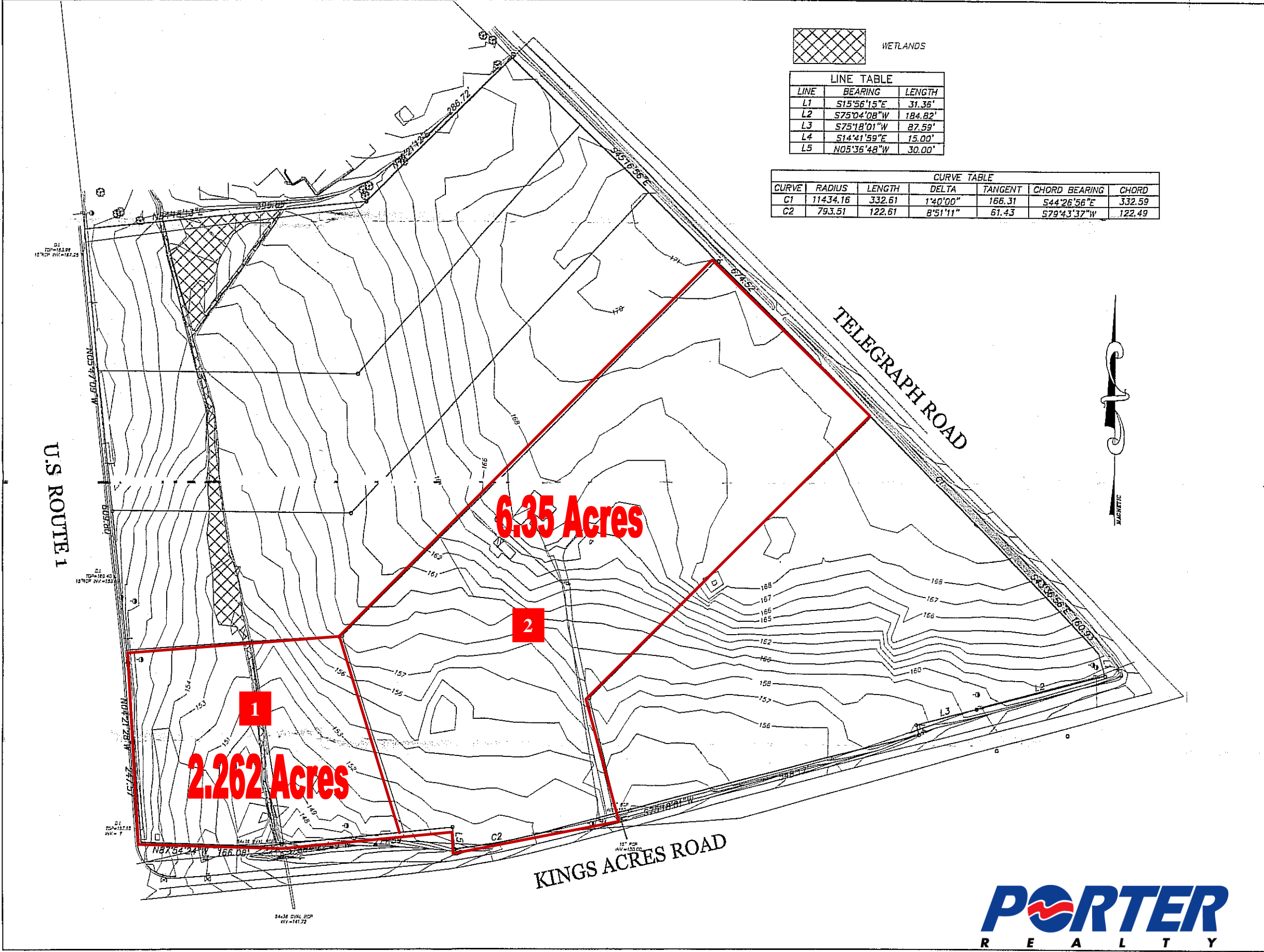
CORFAC
International

SIOR

CCIM

This information has been prepared by Porter Realty Company, Inc. for marketing purposes only. No representation or warranty, expressed or implied, is made as to the content or accuracy of the foregoing information. Terms of sale or lease and availability are subject to change or withdrawal without notice.

8.612 ACRES

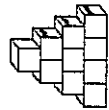


LINE TABLE		
LINE	BEARING	LENGTH
L1	S15°56'15"E	31.36'
L2	S75°04'08"W	184.82'
L3	S75°18'01"W	87.59'
L4	S14°41'59"E	15.00'
L5	N05°36'48"W	30.00'

CURVE TABLE						
CURVE	RADIUS	LENGTH	DELTA	TANGENT	CHORD BEARING	CHORD
C1	11434.16	332.61	1°40'00"	166.31	S44°26'56"E	332.59
C2	793.51	122.61	8°51'11"	61.43	S79°43'37"W	122.49

KESTNER - WERNER, LLC

SUITE 101
10166 STAPLES MILL ROAD
GLEN ALLEN, VIRGINIA 23060
PHONE: (804) 545-6230
FAX: (804) 545-6259
EMAIL: adam@kestnerwerner.com



REVISIONS	
DATE	
DATE	1/15/08
DESIGNED BY	AW
DRAWN BY	AW
SCALE	1"=60'

KINGS ACRES

SOUTH ANNA DISTRICT
HANOVER COUNTY, VIRGINIA

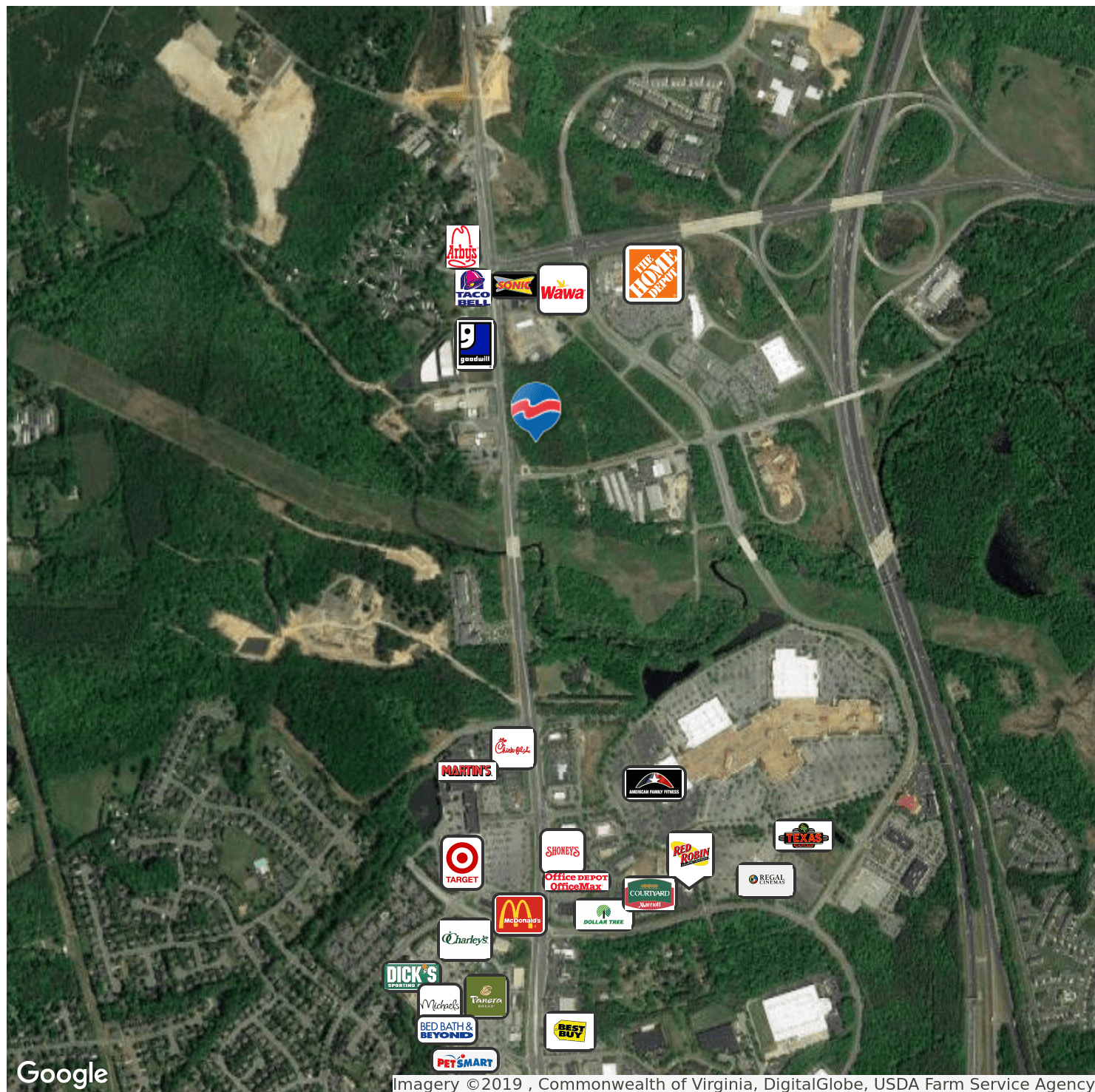
BOUNDARY AND TOPO

SHEET
1 OF 1

PORTER
REALTY

Kings Acres Rd., Ashland, VA 23005

Land For Sale



Clifford B. Porter, CCIM, SIOR
804.521.1442
cliff@porterinc.com



4801 Radford Avenue, P.O. Box 6482, Richmond, VA 23230 | www.porterinc.com

This information has been prepared by Porter Realty Company, Inc. for marketing purposes only. No representation or warranty, expressed or implied, is made as to the content or accuracy of the foregoing information. Terms of sale or lease and availability are subject to change or withdrawal without notice.